



Milverton Place

Easy-living Features

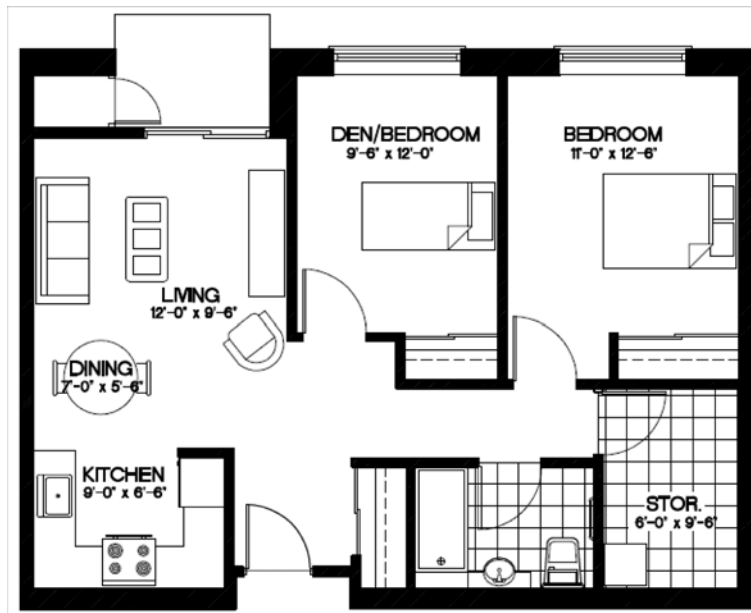
- modern open concept barrier-free design
- laundry closets with washer and dryer
- closet and storage areas
- sheltered patios and balconies
- individually controlled heating and air conditioning
- wide suite entrances and doorways
- barrier-free washrooms
- full size shower with grab bars
- lever style door hardware on all doors
- easy grip cabinet handles
- large windows for more natural light

Get Together with the Neighbours in the Main Floor Lounge

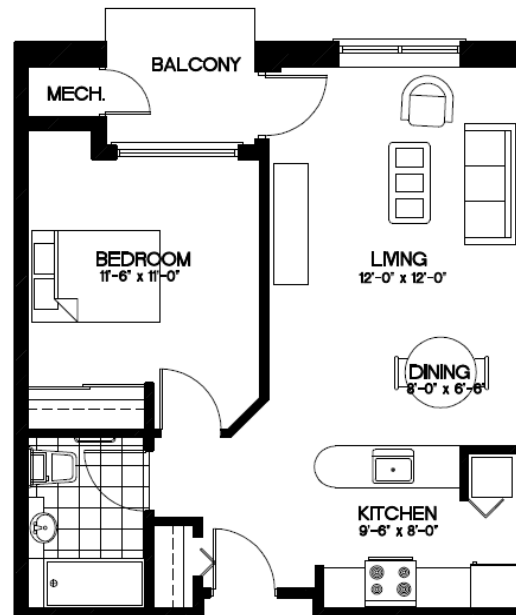
Meet your friends in the Main Floor Lounge for morning coffee or get together for cards in the evening. Chances are you and your new neighbours have similar interests. If you are planning an anniversary or birthday, reserve the room for the event and take advantage of the meal services from Knollcrest Lodge.

***Act Now To Reserve
the Location
of Your Choice***

519 595 8121 x102



***One-Bedroom
and Two-Bedroom Units***
(6 models to choose from)



COMMUNITY OUTREACH

PROGRAMS AND SERVICES:

- **MEALS ON WHEELS: HOT & FROZEN**
Hot or Frozen meal programs up to five days a week
- **SENIORS DAY OUT & DINING PROGRAMS**
Weekly dining programs offer a variety of entertainment and meals for everyone in different areas.
- **FOOT CARE CLINICS**
All your foot care needs can be taken care of in one monthly visit.
- **VOLUNTEER TRANSPORTATION**
Links volunteers with those who need a ride to medical appointments, to run errands, visit, or shop.
- **FRIENDLY VISITING**
Companionship to those who live alone and have few visitors
- **TELEPHONE REASSURANCE**
Regular calls to make sure that everything is alright, for medication reminders and a friendly chat.
- **INFORMATION AND REFERRAL**
- **EMERGENCY RESPONSE SYSTEM**
Lifeline" offers a 24 hour security check. A button worn around the neck or on the wrist is linked with a call centre, ensuring that you can get help if a situation occurs.

WELLNESS FOR SENIORS:

- **CHAP blood pressure clinics**
Free clinics are the first Friday on every month at the Village Pharmacy in Milverton
- **URBAN POLING**
- **S.W.I.F.T. EXERCISES CLASSES**
- **INDOOR WALKING CLUB**
- **PERTH EAST easyride**
"The Foundation of Independence"
Accessible, affordable, safe, and reliable transportation that is co-ordinated for you. Individual or Group bookings can be arranged.

Phone: 519-595-8755

Fax: 519-595-8199

Email: dlichti@knollcrestlodge.com